

①EN ②ZH-TW ③KO

OMRON

Medium Cuff HEM-CR24 Type B

Instruction for use

Thank you for purchasing the OMRON HEM-CR24 Type B. Arm circumference for this cuff is 22 to 32 cm. **Follow this instruction manual and applicable OMRON blood pressure monitor manual thoroughly before use.**

Keep for future reference. For specific information about your own blood pressure, CONSULT YOUR PHYSICIAN.

Symbols description			
	Artery mark		Humidity limitation
LATEX FREE	Not made with natural rubber latex		Atmospheric pressure limitation
	Range indicator of arm circumferences to help selection of the correct cuff size		CE Marking
	Arm circumference		LOT number
	Cuff positioning indicator for the left arm		Reference catalogue number
INDEX 	Range pointer and brachial artery alignment position		Medical device
	Need for the user to consult the instruction manual		Date of manufacture
	Temperature limitation		

Date of manufacture of the cuff is encoded in the first 8 digits in the LOT number printed on the label of the cuff "LOT YYYYMMDD*" where Y = year of manufacture, M = month of manufacture and D = date of manufacture.

Depending on the product, some of the above symbols may not be applicable on the product.

Please report to the manufacturer and the competent authority of the Member State in which you are established about any serious incident that has occurred in relation to this device.

	Manufacturer OMRON HEALTHCARE Co., Ltd. 53, Kunotsubo, Terado-cho, Muko, KYOTO, 617-0002 JAPAN
	EU-representative OMRON HEALTHCARE EUROPE B.V. Scorpius 33, 2132 LR Hoofddorp, THE NETHERLANDS www.omron-healthcare.com
Importer in EU	
Asia Pacific HQ	OMRON HEALTHCARE SINGAPORE PTE LTD. www.omronhealthcare-ap.com
Production Facility	OMRON HEALTHCARE MANUFACTURING VIETNAM CO., LTD. Binh Duong Province, VIETNAM



Made in Vietnam

All for Healthcare

3275317-0C
Issue Date:2021-12-07

Important Safety Information

Warning Indicates a potentially hazardous situation which, if not avoided, could result in death or serious injury.

- To help avoid strangulation, keep the air tube away from infants, toddlers and children.
- Keep components out of the reach of infants, toddlers or children. This product contains small parts that may cause a choking hazard if swallowed by infants, toddlers and children.

Caution Indicates a potentially hazardous situation which, if not avoided, may result in minor or moderate injury to the user or patient, or cause damage to the equipment or other property.

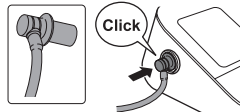
- This OMRON arm cuff can be connected to various OMRON Blood Pressure Monitors. This cuff only works with OMRON Blood Pressure Monitors compatible with HEM-CR24 Type B, as noted on cuff sticker next to the air jack.
- Check your present product as to which plug you must use. Using the wrong plug may cause air leakage and incorrect readings.
- Remove tight-fitting and thick clothing from your arm while taking a measurement.
- ONLY use the arm cuff on persons whose arm circumference is within the specified range of the cuff.
- DO NOT crease the arm cuff or the air tube excessively.
- DO NOT fold or kink the air tube while taking a measurement. This may cause an injury by interrupting blood flow.
- To unplug the air plug, pull on the plastic air plug at the base of the tube, not the tube itself.

Instructions for use

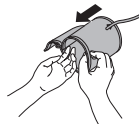
1. Connect the correct air plug to the air tube.
2. Plug the arm cuff into your monitor by inserting the air plug into the air jack securely.

Note:

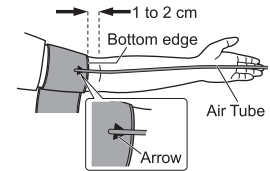
If you are using the air plug as the image shown on the right, make sure inserting it into the air jack until it clicks.



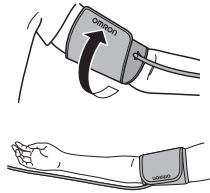
3. Place your hand through the cuff loop. Pull the cuff until it reaches your upper left arm.



The bottom edge of the arm cuff should be 1 to 2 cm above the inside elbow. Marker (arrow under the air tube) is centered on the middle of your inner arm. The air tube is on the inside of your arm and aligned with your middle finger.



4. Make sure that the air tube is positioned on the inside of your arm and wrap the cuff securely so it can not move around your arm.



Taking measurements on the right arm

The air tube should run along the side of your elbow, along the bottom of your arm. Be careful not to rest your arm on the air tube.

Note: The blood pressure can differ between the right arm and the left arm, and the measured blood pressure readings can be different. OMRON recommends to always use the same arm for measurements. If the readings between both arms differ substantially, check with your physician to determine which arm to use for your measurements.

Maintenance

- Do not use any abrasive or volatile cleaners.
- Use a soft dry cloth or a soft cloth moistened with mild (neutral) detergent to clean the arm cuff and then wipe it with a dry cloth.
- Do not wash or immerse the arm cuff in water.
- Do not use gasoline, thinners or similar solvents to clean the arm cuff.
- Do not store the arm cuff in locations exposed to extreme temperatures, humidity, direct sunlight, dust or corrosive vapors such as bleach.

Specifications

Product description	Upper Arm Blood Pressure Monitor Cuff
Product name	Medium Cuff
Model	HEM-CR24 Type B REF HEM-CR24-BAP
Arm circumference	22 to 32 cm
Dimensions	Approx. 146 mm × 466 mm (air tube: 610 mm)
Operating conditions	+10 °C to +40 °C / 15 to 90 % RH (non-condensing) / 800 to 1060 hPa
Storage/ Transport conditions	-20 °C to +60 °C / 10 to 90 % RH (non-condensing)
Durable period/Service life	5 years

This OMRON product is produced under the strict quality system of OMRON HEALTHCARE Co., Ltd., JAPAN.